

NOBEL PRIZE MUSEUM

Invitation

&

Stockholm Academic Forum

Invite you to join the 2nd Edition of

# Stockholm Explorative Talks

2019 Theme: Boundaries

Stockholm Explorative Talks is a forum with an aim to move beyond habitual patterns and methods. This year's appointed curators, **Karina Ericsson Wärn** and **Micael Dahlen**, will use imagination to step into new and different roles as a way of pushing disciplinary borders, making a change and reaching new insights.

A number of carefully selected scholars from different disciplines and from different universities in Stockholm, **The Team**, will be pushed to challenge themselves and each other to try ideas and problems in a creative way.

**Monday 14 October 2019**

Royal College of Music in Stockholm (KMH), Lilla salen

Address: Valhallavägen 105

Start: 9.15 sharp

End: 11.30 – Lunch will be served

Would you like to be part of **The Audience**?

Register no later than 4 October

This invitation is personal and  
there is a limited number of seats.

[>>Click here to Register](#)

## The Curators



### **Micael Dahlen**

is Professor at the Stockholm School of Economics with a leading position in the field of consumer behavior, creativity, and marketing. Dahlen has been ranked number 10 in the world among researchers in his field and was nominated for the Business Professor of the Year Award by The Economist's Intelligence Unit.

During 2019 Dahlen is on stage and makes a Performance Lecture on Happiness at Dramaten in collaboration with the Nobel Prize Museum. Together with Moira von Wright he was in 2018 curator of the very first Stockholm Explorative Talks.



### **Karina Ericsson Wärn**

is an Art Curator, Fashion Writer, and Vice-Chancellor of Beckmans College of Design. She has over thirty years of experience in art, design, communication and fashion.

Among other things Karina Ericsson Wärn was Head of Art/Design at Kulturhuset – Stockholm House of Culture in 2016–2017 and in the beginning of the 2000's, she led the Curator Lab at Konstfack – University of Arts, Crafts and Design. Ericsson Wärn has been a regular contributor to several major newspapers and magazines, and has written numerous books on fashion, lifestyle and beauty.

## The Team

The Team is carefully picked from different disciplines and various backgrounds. In common they are all scholars affiliated with one of Stockholm's 18 universities. But even more important – they are creative, prestigeless, and courageous!



### Mattia Bianchi

is Professor of Business Administration at the House of Innovation of the Stockholm School of Economics. He is a highly reputable scholar in innovation

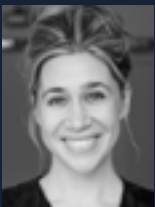
and new product development, with a special focus on open innovation, lean and agile management and design thinking. He investigates the factors that allow organizations to be both creative and efficient in their innovation initiatives. Furthermore, he was named MSc Teacher of the Year in 2018 at SSE.



### Alex Nowitz

is a composer and vocal performance artist. In 2019, he received a PhD with specialisation in Opera from the Stockholm University of the Arts.

Through different artistic practices - vocal, oral, bodily and technology-related – his research unfolds what is conceived as a bountiful “vocal imaginary”. The range of his voice covers the countertenor, whistling, speaking and a variety of experimental voice types.



### Sabina Čehajić-Clancy

is Associate Professor of Social Psychology at Sarajevo School of Science and Technology. She was awarded a Pro Futura Fellowship in 2019 and will be

affiliated to the Department of Psychology at Stockholm University. Sabina specializes in the field of intergroup relations, specifically on reconciliation in post-conflict societies, collective emotions of guilt and shame and collective responsibility.



### Alessandro Petti

is Professor in Architecture and Social Justice at Royal Institute of Art. He combines theoretical research with an architectural, artistic, and pedagogical

practice engaged in the struggle for justice and equality. He founded “Campus in Camps”, an experimental educational program in a refugee camp in Bethlehem.



### Sanna Kuoppamäki

PhD, is a sociologist and a new technology researcher with a focus on developing human insights to digital technologies from the life course

perspective, particularly addressing older adults' usage of digital technologies. She recently joined the Department of Biomedical Engineering & Health Systems at KTH Royal Institute of Technology.



### Nanda Wijermans

PhD, is a researcher at Stockholm Resilience Center at Stockholm University. In her research she focuses on understanding human behaviour

in group(s) as a part of a complex (social) system, or in another word, social-ecological systems. She has a multidisciplinary approach in her research with an interesting mixture of computer science, psychology, mathematics, philosophy, etc.

## Get enlightened this autumn!

Stockholm Explorative Talks is a collaboration between Stockholm Academic Forum and the Nobel Prize Museum and is an official event of Nobel Calling Stockholm, 7–14 October, 2019

Full programme at [nobelprizemuseum.se/nobel-calling](http://nobelprizemuseum.se/nobel-calling)